

The Heathland School

A Mathematics and Science College



| | |
|---------------------------|--|
| Examination Policy | 2023 – 2024 |
| Person(s) Responsible: | Headmaster, Deputy Head Curriculum, Examinations Officer |
| Status: | Statutory |
| Date Approved: | February 2024 |
| Review Period: | As and when required |

Key staff involved in the exams policy

| Role | Name(s) |
|--|---------------------------------|
| Head of Centre | Mr J M Rose |
| Deputy Head Curriculum (line manager) | Mrs M Sandhu |
| Exams Officer | Miss K K Kundi |
| ALS lead/SENCo | Ms C Muiyah |
| Senior Leadership (s) | Mr S S Gill, Mr G Sangha |

Purpose of the policy

The Heathland School is committed to ensuring that the exams management and administration process is run effectively and efficiently and in compliance with the published JCQ regulations and awarding body requirements.

The purpose of this exam policy is:

- to ensure the planning and management of exams is conducted efficiently and in the best interest of candidates
- to ensure the operation of an efficient exam system with clear guidelines for all relevant staff.

It is the responsibility of everyone involved in the centre's exam processes to read, understand and implement this policy.

This exam policy will be reviewed annually to ensure ways of working in the centre are accurately reflected and that

exams and assessments are conducted to current JCQ (and awarding body) regulations, instructions and guidance.

This exam policy will be reviewed by the head of centre, deputy head curriculum and examination officer.

1. Exam responsibilities

The head of centre

The head of centre is the individual who is accountable to the awarding bodies for ensuring that the centre is always compliant with the published JCQ regulations and awarding body requirements to ensure the security and integrity of the examinations/assessments. This individual must have the authority to deploy the necessary resources to ensure that the centre is always compliant in meeting those published JCQ regulations and awarding body requirements.

Heads of centre must ensure that senior leadership teams and exam office personnel familiarise themselves with the entire contents of JCQ General Regulations for Approved Centres booklet. In particular, heads of centre must familiarise themselves with sections 5.1, 5.3 and 5.4.

Heads of centre must ensure that relevant members of staff respond promptly to requests for information from awarding bodies relating to the administration and conducting of examinations/assessments. (GR, section 1)

The examinations officer is the person appointed by the head of centre to act on behalf of, and be the main point of contact for, the centre in matters relating to the general administration of awarding body examinations and assessments.

The headteacher/Principal on site (the head of centre) may not appoint themselves as the examinations officer. A head of centre and an examinations officer are two distinct and separate roles.

The head of centre and/or examinations officer may operate across more than one centre. In such cases the head of centre must ensure there is suitable senior leadership team support in place, so they can meet their obligations across all centres for which they are responsible. The head of centre must ensure that these arrangements are covered by their examination contingency plan. (GR, section 2)

Head of centre responsibilities

The **head of centre** is the individual who is accountable to the awarding bodies for ensuring that the centre is always compliant with the published JCQ regulations and awarding body requirements to ensure the security and integrity of the examinations/assessments. **It is the responsibility of the head of centre to ensure that all staff comply with the instructions in the (*Instructions for conducting examinations*) booklet.** Failure to do so may constitute malpractice as defined in the JCQ publication *Suspected Malpractice: Policies and Procedures, 1 September 2023 to 31 August 2024*: <https://www.jcq.org.uk/exams-office/malpractice> (ICE Introduction)

Head of centre

- Understands the contents, refers to and directs relevant centre staff to annually updated JCQ publications including:
 - [General Regulations for Approved Centres](#) (GR)
 - [Instructions for Conducting Examinations](#) (ICE)
 - [Access Arrangements and Reasonable Adjustments](#) (AA)
 - [Suspected Malpractice in Examinations and Assessments](#) (SMEA)
 - [Instructions for conducting non-examination assessments](#) (NEA) (and the instructions for conducting coursework)
 - [A guide to the special consideration process](#) (SC)

- Staff/Invigilators have cleared Disclosure and Barring Service (DBS) Clearance.
- Ensures the centre has appropriate accommodation to support the size of the cohorts being taught including appropriate accommodation for candidates requiring access arrangements and/or practical assessments
- Where/if using a third party to deliver any part of a qualification (including its assessments) at the centre:
 - maintains oversight of, and responsibility for, the delivery of the qualification in accordance with JCQ regulations and awarding body requirements
 - has in place a written agreement with the third party to ensure there is a shared understanding of the arrangement and will manage the risk of failure by the third party to deliver the expected service
 - ensures that a copy of the written agreement is available for inspection if requested by the awarding body
- Ensures that relevant members of staff respond promptly to actions raised by the JCQ Centre Inspection Service, understanding that failure to do so could result in penalties (see National Centre Number Register and other information requirements section)
- Ensures that the centre promptly reports any incidents to the relevant awarding body/bodies which might compromise any aspect of assessment delivery such as a cyber-attack
- Ensures other relevant centre staff where they may be involved in the receipt and dispatch of confidential exam materials are briefed on the requirements for maintaining the integrity and confidentiality of the exam materials
- Ensures members of centre staff do not forward emails and letters from awarding body or JCQ personnel without prior consent to third parties or upload such correspondence onto social media sites and applications
- Ensures members of centre staff do not advise parents/candidates to contact awarding bodies/JCQ directly nor provide them with addresses/email addresses of awarding body examining/assessment personnel or JCQ personnel

Recruitment, selection, training and support

- Retains a workforce of an appropriate size and competence, including sufficient managerial and other resource, to undertake the delivery of the qualification as required by an awarding body. This includes taking reasonable steps to ensure occupational competence where this is required for the assessment of specific qualifications
- Provides fully qualified teachers to mark non-examination assessments, and/or fully qualified assessors for the verification of centre-assessed components
- Enables the relevant senior leader(s), the examinations officer and the ALS lead/SENCo to receive appropriate training and support in order to facilitate the effective delivery of examinations and assessments within the centre, and ensure compliance with the published JCQ regulations
- Appoints a ALS lead/SENCo who will determine appropriate arrangements for candidates with learning difficulties and disabilities
- Ensures that the ALS lead/SENCo has sufficient time to both manage the access arrangements process within the centre and familiarise him/herself with the JCQ publication Access Arrangements and Reasonable Adjustments
- Ensures that the examinations officer has sufficient time to perform their role and familiarise him/herself with relevant body and JCQ documentations.
- Ensure that the examinations officer is line managed and actively supported by a member of the senior leadership team who has a good working knowledge of the examination system

External and Internal governance arrangements

- Has in place a written escalation process should the head of centre, or a member of the senior leadership team with oversight of examination administration, be absent

Escalation Process

Appendix 1

It is the responsibility of the **head of centre** to ensure that his/her centre... has in place a written escalation process should the head of centre, or a member of the senior leadership team with oversight of examination administration, be absent ([GR 5.3 External and Internal governance arrangements](#))

- Has in place Deputy Head Curriculum Mrs M Sandhu there after Senior Deputy Head Mr S Gill , followed by Deputy Head **Mr G Sangha** who will provide **effective** support and **supervision** the examinations officer **to** ensure that the integrity and security of examinations and assessments is maintained throughout an examination series
- **Can confirm to an awarding body the external governance arrangements so that the awarding body has confidence in the integrity of centre activities such as the delivery of qualifications and the conducting of examinations and assessments**
- Makes sure that a teacher, **a teaching assistant, a tutor** or a senior member of centre staff who teaches the subject being examined **or a Learning Support Assistant who has supported one of more candidates**, is not an invigilator during the examination
- If the senior leadership team are unable to provide support and guidance to the examinations officer then the duty will be escalated to Assistant Deputy Heads:
 - Ms F Constandi
 - Mr P Birch

Delivery of qualifications

- Delivers qualifications, as required by the awarding body, in accordance with relevant equality legislation. This includes but is not limited to ensuring that qualifications are made available to all candidates capable of undertaking them and seeking reasonable adjustments for disabled candidates
- Enables candidates to receive sufficient and up to date laboratory experience, or relevant training where required by the subject concerned

Public liability

- Complies with local health and safety rules which are in place and that the centre is adequately covered for public liability claims

Security of assessment materials

- Takes all reasonable steps to maintain the integrity of the examinations/assessments, including the security of all assessment materials, by ensuring:
 - the location of the centre's secure storage facility in a secure room which must only be used for the purpose of administering secure examination materials
 - the secure room only contains exam-related material
 - there are only two keyholders only, each **keyholder** must fully understand their responsibilities as a key holder to the secure storage facility

- access to the secure room and secure storage facility is restricted to the authorised two keyholders (the exams officer must be one of the keyholders) and staff approved by the head of centre are accompanied by a keyholders at all times
- appropriate arrangements are in place to ensure that confidential examinations materials are only handed over to authorised members of centre staff
- Appropriate arrangements are in place for handling secure electronic materials. In the event of absence of the EO, the assistance EO will have access only to electronic materials.
- the relevant awarding body is immediately informed if the security of question papers or confidential supporting instructions is put at risk
- that when it is permitted to remove question papers packets from secure storage, and to avoid potential breaches of security, arrangements are in place to carefully check and record that the correct question paper packets are opened
(If it is ever subsequently identified following this check that the wrong question paper packet has been opened, it will be resealed and the incident reported to the relevant awarding body's Malpractice Investigation Team immediately)
- Makes arrangements to receive, check and store question papers and examination material safely and securely at all times and for as long as required in accordance with the current JCQ publication Instructions for conducting examinations
- Makes arrangements to receive and issue material received from the awarding bodies to staff and candidates, and notify them of any advice and instructions relevant to the examinations and assessments
- Allows candidates access to relevant pre-release materials on, or as soon as possible after, the date specified by the awarding bodies

Malpractice

- Through taking an ethical approach and working proactively to avoid malpractice among students and staff takes all reasonable steps to prevent the occurrence of any malpractice/maladministration before, during and after assessments have taken place
- Ensures any person involved in administering, teaching or completing examinations/assessments is advised that where malpractice is suspected, or alleged, personal data about them will be provided to the awarding body (or bodies) whose examinations/assessments are involved. Personal data about them may also be shared with other awarding bodies, the qualifications regulator or professional bodies in accordance with the JCQ publication Suspected Malpractice – Policies and Procedures
- Ensures irregularities are investigated and informs the awarding bodies immediately of any alleged, suspected or actual incidents of malpractice or maladministration, involving a candidate or a member of staff, by completing the appropriate documentation
- As required by an awarding body, ensures evidence of any instances of alleged or suspected malpractice (which includes maladministration) is gathered in accordance with the JCQ publication Suspected Malpractice - Policies and Procedures and provides such information and advice as the awarding body may reasonably require

Policies/Procedures

Malpractice Policy (Exams)

The school internal Contingency plan are available electronically via the staff portal under Examinations/Polices.

Refer to [GR](#) (section 5.3) Policies available for inspection

Also refer to the JCQ document **AI Use in Assessments: Protecting the Integrity of Qualifications** (<http://www.jcq.org.uk/exams-office/malpractice>) to update the centre's malpractice/plagiarism policy to acknowledge the use of AI (e.g. what it is, the risks of using it, what AI misuse is, how this will be treated as malpractice, when it may be used and how it should be acknowledged) – most simply by referencing this document

- Ensures risks to the exam process are assessed and appropriate risk management processes/contingency plans are in place (that allow the senior leadership team to act immediately in the event of an emergency or staff absence) where the head of centre, the examinations officer or SENCo is absent at a critical stage of the examination cycle) The examination contingency plan should reinforce procedures in the event of the centre being unavailable for examinations owing to an unforeseen emergency. All relevant centre staff must be familiar with the examination contingency plan. Consideration should be given as to how these arrangements will be communicated to candidates, parents and staff should disruption to examinations occur.

Exam contingency plan

The school internal Contingency plan are available electronically via the staff portal under Examinations/Polices.

a written examination contingency plan which covers all aspects of examination administration. This will allow members of the senior leadership team to act immediately in the event of an emergency or staff absence. The examination contingency plan should reinforce procedures in the event of the centre being unavailable for examinations, or on results day, owing to an unforeseen emergency; [GR 5.3x] (Policies available for inspection)

Lockdown Policy (Exams)

Appendix 2

The school lockdown Policy and procedure are available electronically via the staff portal under Examinations/Polices

- Ensures an internal appeals procedures is in place and drawn to the attention of candidates and (where relevant) their parents/carers

Internal appeals procedures

The school internal appeals procedure are available electronically via the staff portal under Examinations/Polices.

Internal Appeals procedure (Internal Assessment) Refer to [GR \(section 5.7\)](#) Centre assessed work, Post-results services and appeals, [GR \(section 5.3\)](#) Policies available for inspection

- Ensures the centre's equalities policy demonstrating the centre's compliance with relevant legislation is in place and details the processes followed in respect of identifying the need for, requesting and implementing access arrangements

Equalities Policy

The school internal Equalities Policy is available electronically via the staff portal under Examinations/Polices.

Refer to [GR](#) (section 5.3) **Policies available for inspection**) and (5.4) **Access arrangements and reasonable adjustments**

- Ensures a complaints **policy** covering general complaints regarding the centre's delivery or administration of a qualification is in place and drawn to the attention of candidates and their parents/carers

Complaints **Policy** (Exams)

The school internal complains **policy** are available electronically via the staff portal under Examinations/Polices.

The centre will... draw to the attention of candidates and their parents/carers their written complaints policy which will cover general complaints regarding the centre's delivery or administration of a qualification.

[[GR 5.8e](#)] Candidate information and (section 5.3) **Policies Available for inspection**

- Ensures the centre has a **child protection/safeguarding policy in place, including Disclosure and Barring Service (DBS) clearance**, which satisfies current legislative requirements

Child protection/safeguarding policy (Exams)

The school internal Child protection/safeguarding policy are available electronically via the staff portal under whole school Polices.

It is the responsibility of the head of centre to ensure that his/her centre... has in place the following policies available for inspection... a written child protection/safeguarding policy, including Disclosure and Barring Service (DBS) clearance, which satisfies current legislative requirements... (GR 5.3) Policies available for inspection

- Ensures the centre has a data protection policy in place that complies with General Data Protection Regulation and Data Protection Act 2018 regulations

Data protection policy (Exams)

The school internal Data protection policy are available electronically via the staff portal under Examinations/Polices.

It is the responsibility of the head of centre to ensure that his/her centre... has in place the following policies available for inspection... a written data protection policy (GR 5.3) Policies available for inspection

The centre will... ensure that all candidate data where required by the awarding body has been supplied to the awarding bodies within the terms of the General Data Protection Regulation, the Data Protection Act 2018 and the Freedom of Information Act 2000, and that candidates have been properly informed that this

data has been transferred to the awarding bodies (see section 6, page 23, for more information)...
[\[GR 5.8\]](#) Candidate information

Legislation on sharing information

Under the principles of the General Data Protection Regulations 2018 and the Data Protection Act 2018, children and young adults can assume control over their personal information and restrict access to it from the age of 13.

This suggests that candidate consent should be sought to share results or other exams-related information with a third party.

Other legislation and guidance may need to be taken into account regarding sharing information with parents, as example information from the DfE for schools regarding parental responsibility and school reports on pupil performance:

- Understanding and dealing with issues relating to parental responsibility (last updated 24 August 2023 to include) www.gov.uk/government/publications/dealing-with-issues-relating-to-parental-responsibility/understanding-and-dealing-with-issues-relating-to-parental-responsibility
- School reports on pupil performance: guidance for head teachers www.gov.uk/guidance/school-reports-on-pupil-performance-guide-for-headteachers

Publication of exam results

Refer to ICO (Information Commissioner's Office) [Education and Families](#) information and the document [Publishing exam results](#).

- Ensures the centre has a whistleblowing policy in place

Whistleblowing Policy (Exams)

The school Whistleblowing Policy is available electronically via the staff portal under Examinations/Polices.

Refer to [GR](#) (section 5.3) **Policies available for inspection**

- Ensures the centre has documented processes in place relating to access arrangements and reasonable adjustments

Access Arrangements Policy

The school Access Arrangements Policy is available electronically via the staff portal under Examinations/Polices.

There is no specific JCQ regulation that refers to a 'policy' requirement in this respect though it might be good practice to bring all aspects of the process together in one place thereby confirming the centre complies with [GR](#) (section 5.4f)

- Ensures members of centre staff do **not** forward e-mails and letters from awarding body or JCQ personnel without prior consent to third parties or upload such correspondence onto social media sites and applications
- Ensures members of centre staff do **not** advise parents/candidates to contact awarding bodies/JCQ directly nor provide them with addresses/email addresses of awarding body examining/assessment or JCQ personnel

Conflicts of interest

- Ensures the relevant awarding bodies are informed before the published deadline for entries or each examination series of any potential conflict of interest where:
 - any member of centre staff is taking a qualification at the centre which includes internally assessed components/units (noting that being entered by the centre must be as a last resort where unable to find an alternative centre)
 - a candidate is being taught and prepared for a qualification which includes internally assessed components/units by a member of centre staff with a close relationship to the candidate
- Maintains clear records that confirm the measures taken/protocols in place to mitigate any potential risk to the integrity of the qualifications affected by the above, and where:
 - a member of exams office staff has a close relationship to a candidate being entered for exams and assessments at the centre or at another centre
 - a member of centre staff is taking a qualification at the centre which does not include internally assessed components/units (noting that being entered by the centre must be as a last resort where unable to find an alternative centre)
 - a member of centre staff is taking a qualification at another centre

The Role of the head of centre:

- Ensure conflicts of interest are managed according to the requirements (GR5.3)
- Ensure clear records are maintained and that the records include details of the measures taken to mitigate any potential risk to the integrity of the qualifications affected (GR 5.3)
- Ensure the records are available where they may be requested by a JCQ Centre Inspector and/or awarding body staff (GR 5.3)
- Ensure the records are retained until the deadline for reviews of marking has passed or until any appeal, malpractice or other results enquiry has been completed, whichever is later (GR 5.3).
- Ensure that entering members of centre staff for qualifications at this centre is as a last resort in cases where the member of centre staff is unable to find another centre
- Ensure that proper protocols are in place to prevent the member of centre staff having access to examination materials prior to the examination and that other centre staff are briefed on maintaining the integrity and confidentiality of the examination materials
- Ensure that during the examination series the member of centre staff is treated in the same way as any other candidate entered for that examination, does not have access to examination materials and does not receive any preferential treatment (GR 5.3)

The role of the exams office/officer

- Ensure the process for collecting declarations of interest is undertaken.

Identify and follow the awarding body's administrative process for submitting details of members of staff who are:

- Taking qualifications which include internally assessed components/units at their own centre
- Teaching and preparing members of their family (which includes step-family, foster family and similar close relationships) or close friends and their immediate family (e.g. son/daughter) for qualifications which include internally assessed components/units (GR 5.3)
- Retain the records of the measures taken to mitigate any potential risk to the integrity of the qualifications affected until the deadline for reviews of marking has passed or until any appeal, malpractice or other results enquiry has been completed, whichever is later (GR 5.3)

National Centre Number Register and other information requirements

- Provides contact details and an address to which all correspondence in connection with the administration of examinations and assessments can be directed which must be the registered address of the centre
- Ensures the National Centre Number Register annual update is responded to by the end of October every year
- Takes responsibility for confirming, on an annual basis, that they are both aware of and adhering to the latest version of the JCQ's regulations. This confirmation is managed as part of the National Centre Number Register (NCNR) annual update by completion of the Head of Centre Declaration
- Understands that this responsibility cannot be delegated to a member of the senior leadership team or the examinations officer, and acknowledges that failure to respond to the NCNR annual update, and/or the head of centre's declaration, will result in:
 - the centre status being suspended
 - the centre not being able to submit examination entries
 - the centre not receiving or being able to access question papersand ultimately, awarding bodies could withdraw their approval of the centre

Centre inspections

- Co-operates with the JCQ Centre Inspection Service, an awarding body or a regulatory authority when subject to an inspection, an investigation or an unannounced visit, and takes all reasonable steps to comply with all requests for information or documentation made by an awarding body or regulatory authority as soon as is practical
- Allows all venues used for examinations and assessments, paperwork and secure storage facilities to be open to inspection
- Understands the JCQ Centre Inspector will identify him/herself with a photo ID card and must be accompanied throughout his/her tour of the premises, including inspection of the centre's secure storage facility

Examinations Officer

- Understands the contents of annually updated JCQ publications including:
 - [General Regulations for Approved Centres](#)
 - [Instructions for Conducting Examinations](#)
 - [Suspected Malpractice - Policies and Procedures](#)
 - [Post-results services \(PRS\)](#)
 - [A guide to the special consideration process](#)
- Completes/submits the National Centre Number Register annual update (administered on behalf of the JCQ member awarding bodies by OCR <https://ocr.org.uk/administration/ncn-annual-update/>) by the end of October every year
 - Confirms the details or informs the awarding bodies of any changes to the centre's contact details through the National Centre Number Register
 - Informs the National Centre Number Register Team **immediately** (e-mail address – ncn@ocr.org.uk) if any changes occur after the National Centre Number Register annual update has taken place
 - (Where it may be applicable) Informs the National Centre Number Register Team no later than 6 weeks prior to moving to a new address or a re-location of the secure storage facility
 - Informs the National Centre Number Register Team immediately of any other changes in circumstances that could affect the centre's status

Manages the administration of public and internal exams and is involved with analysis of exam results:

- Is familiar with the contents of annually updated information from awarding bodies on administrative procedures, key tasks, key dates and deadlines
- Ensures key tasks are undertaken and key dates and deadlines met
- advises the senior leadership team, subject and class tutors and other relevant support staff on annual exam timetables and application procedures as set by the various exam boards
- oversees the production and distribution to staff, governors and candidates of an annual calendar for all exams in which candidates will be involved and communicates regularly with staff concerning imminent deadlines and events
- ensures that candidates and their parents are informed of and understand those aspects of the exam timetable that will affect them and informs candidates of any contingency day awarding bodies may identify in the event of national or local disruption to exams
- consults with teaching staff to ensure that necessary non-examinations assessments/coursework is completed on time and in accordance with JCQ guidelines
- provides and confirms detailed data on estimated entries
- Receives, checks and stores securely all exam papers and completed scripts, posting of exam scrips.
- administers access arrangements and makes applications for special consideration using the *JCQ Access arrangements and special considerations regulations* and *Guidance relating to candidates who are eligible for adjustments in examinations*
- identifies and manages exam timetable clashes
- accounts for income and expenditures relating to all exam costs/charges
- Exams officer takes responsibility of organising the recruitment, training and monitoring of a team of exams invigilators responsible for the conduct of exams
- All staff used by contracting supply have forwarded a vetting list for all staff on rota
- Works with the ALS lead/SENCo to ensure invigilators supervising access arrangement candidates and those acting as a facilitator supporting access arrangement candidates fully understand the respective role and what is and what is not permissible in the exam room
- Supports the Head of Centre in ensuring that awarding bodies are informed (where required) of any conflict of interest declared by members of centre staff and in maintaining records that confirm the measures taken/protocols in place to mitigate any potential risk to the integrity of the qualifications affected before the published deadline for entries for each examination series
- submits candidates' centre assessed marks/coursework, tracks dispatches and stores returned coursework and any other material required by the appropriate awarding bodies correctly and on schedule
- arranges for dissemination of exam results and certificates to candidates and forwards, in consultation with the HLT, any appeals/review of marking requests
- Maintains systems and processes to support the timely entry of candidates for their exams.
- Confirms appropriate arrangements are in place to ensure that confidential materials are only delivered to those authorised by the head of centre.
- Has a process in place to demonstrate the receipt, secure movement and secure storage of confidential exam materials within the centre
- Ensures a log is kept at the initial point of delivery recording confidential materials received and signed for by authorised staff within the centre and that appropriate arrangements are in place for confidential materials to be immediately transferred to the secure storage facility until they can be removed from the dispatch packaging and checked in the secure room before being returned to the secure storage facility in timetable order
- Ensures the secure storage facility contains only current and live confidential material
- Ensures that examination stationery, e.g. answer booklets and formula booklets are stored in the secure room (attempting to store this material in the secure storage facility, when sufficient space allows)
- Recruits additional invigilators where required to effectively cover all exam periods/series' throughout the academic year

Additional Learning Support (ALS) lead/Special educational needs co-ordinator (SENCo)

- Understands the contents, refers to and directs relevant centre staff to annually updated JCQ publications including [Access Arrangements and Reasonable Adjustments](#)
- Administration of access arrangements.
- Identification and testing of candidates' requirements for access arrangements.
- Gathers signed Personal data consent, Privacy Notice (AAO) and Data Protection confirmation forms (candidate personal data consent form) from candidates where required
- Applies for **approval** through **Access arrangements online** (AAO) via the **Centre Admin Portal** (CAP), where required or through the awarding body where qualifications sit outside the scope of AAO
- Keeps a file for each candidate for JCQ inspection purposes containing all the required documentation (if documentation is stored electronically, an e-folder must be created for each individual candidate.
- Employs good practice in relation to the Equality Act 2010
- Gathers evidence to support the need for access arrangements for a candidate
- Ensures staff appointed to facilitate access arrangements for candidates are appropriately trained and understand the rules of the particular arrangement(s) and keeps a record of the content of training provided to facilitators for the required period
- Works with the EO to ensure invigilators and those acting as a facilitator fully understand the respective role and what is and what is not permissible in the exam room
- Provision of additional support — with spelling, reading, mathematics, dyslexia or essential skills, hearing impairment, English for speakers of other languages, ICT equipment — to help candidates achieve their course aims.
- Presents when requested by a JCQ Centre Inspector, evidence of the assessor's qualification

Senior leaders

- Are familiar with the contents, refer to and direct relevant centre staff to annually updated JCQ publications including:
 - [General Regulations for Approved Centres](#)
 - [Instructions for Conducting Examinations](#)
 - [Access Arrangements and Reasonable Adjustments](#)
 - [Suspected Malpractice - Policies and Procedures](#)
 - [Instructions for conducting non-examination assessments \(and the instructions for conducting coursework\)](#)
 - [A guide to the special consideration process](#)
- Ensure teaching staff undertake key tasks, as detailed in this policy, within the exams process (exam cycle) and meet internal deadlines set by the EO and ALS lead/SENCo
- Ensure teaching staff keep themselves updated with awarding body subject and teacher-specific information to confirm effective delivery of qualifications
- Ensure teaching staff attend relevant awarding body training and update events

Heads of Department

- Guidance and pastoral oversight of candidates who are unsure about exam entries or amendments to entries.
- Involvement in post-results procedures.
- Accurate completion of centre assessed marks/coursework and declaration sheets.
- Accurate completion of entry and all other mark sheets and adherence to deadlines as set by the exams officer.

Teaching staff

- Undertake key tasks, as detailed in this policy, within the exams process and meet internal deadlines set by the EO and ALS lead/SENCo

- Keep updated with awarding body subject and teacher-specific information to confirm effective delivery of qualifications
- Attend relevant awarding body training and update events
- Notification of access arrangements (as soon as possible after the start of the course).
- Submission of candidate names to subject team leaders.

Invigilators

- Attend/undertake training (on the current regulations), update, briefing and review sessions as required
- Sign a confidentiality and security agreement and confirm whether they have any current maladministration/malpractice sanctions applied to them
- Collection of exam papers and other material from the exams office before the start of the exam.
- Collection of all exam papers in the correct order at the end of the exam and their return to the exams office.

Reception staff

- Support the EO in the receipt and dispatch of confidential exam materials and follow the requirements for maintaining the integrity and confidentiality of the exam materials
- Follow the process to log confidential materials delivered to/received by the centre to the point materials are issued to authorised staff for transferal to the secure storage facility

Site staff

- Support the EO in relevant matters relating to exam rooms and resources

Candidates

- Confirmation and signing of entries.
- Understanding centre assessed marks/coursework regulations and signing a declaration that authenticates the work as their own.

2. Assessments and Qualifications offered

The statutory assessments and qualifications offered at this centre are decided by the head of centre and the senior leadership team.

The statutory tests and qualifications offered are GCSE, A levels, BTEC and Vocational Qualifications.

The subjects offered for these qualifications in any academic year may be found on the center's website. If there has been a change of syllabus from the previous year, the exams office must be informed.

At key stage 4

All candidates will be entitled, and enabled, to achieve an entry for qualifications from an external awarding body.

At post-16

All candidates will be entitled, and enabled, to achieve an entry for qualifications from an external awarding body.

The exam cycle

The exams management and administration process that needs to be undertaken for each **exam series** is often referred to as the **exam cycle** and relevant tasks required within this grouped into the following stages:

- planning
- entries
- pre-exams
- exam time
- results and post-results

This policy identifies roles and responsibilities of centre staff within this cycle.

Planning: roles and responsibilities

Information sharing

Head of centre

- Directs relevant centre staff to annually updated JCQ publications including [GR](#), [ICE](#), [AA](#), [SM](#), [NEA](#) (and the *Instructions for conducting coursework*) and [SC](#)

Exams officer

- Signposts relevant centre staff to JCQ publications and awarding body documentation relating to the exams process that have been updated
- Signposts relevant centre staff to JCQ information that should be provided to candidates
- As the centre administrator, approves relevant access rights for centre staff to access awarding body secure extranet sites

Information gathering

Exams officer

- Undertakes an annual information gathering exercise in preparation for each new academic year to ensure data about all qualifications being delivered is up to date and correct
- Collates all information gathered into one central point of reference
- Researches awarding body guidance to identify administrative processes, key tasks, key dates and deadlines for all relevant qualifications
- Produces an annual exams plan of key tasks and key dates to ensure all external deadlines can be effectively met; informs key centre staff of internal deadlines
- Collects information on internal exams to enable preparation for and conduct of (insert the titles these internal exams are referred to in the centre)

Senior leaders

- Respond (or ensure teaching staff respond) to requests from the EO on information gathering
- Meet the internal deadline for the return of information
- Inform the EO of any changes to information in a timely manner minimising the risk of late or other penalty fees being incurred by an awarding body
- Note the internal deadlines in the annual exams plan and directs teaching staff to meet these

Access arrangements

Head of centre

- Ensures there is appropriate accommodation for candidates requiring access arrangements in the centre for all examinations and assessments
- Ensures a written process is in place to not only check the qualification(s) of the appointed assessor(s) but that the correct procedures are followed as [in](#) Chapter 7 of the JCQ publication [Access Arrangements and Reasonable Adjustments](#)
- Ensures the ALS lead/SENCo is fully supported in effectively implementing access arrangements and reasonable adjustments once approved

ALS lead/SENCo

- Assesses candidates (or works with the appropriately qualified assessor as appointed by the head of centre) to identify access arrangements/reasonable adjustments requirements
- Gathers **evidence** to support the need for access arrangements for a candidate
- Liaises with teaching staff to gather evidence of **normal way of working** of an affected candidate
- Determines candidate eligibility for arrangements or adjustments that are centre-delegated
- Gathers signed **Personal data consent** forms from candidates where required and ensures **Data protection confirmation(s)** by the examinations officer or SENCo are completed
- Employs good practice in relation to the Equality Act 2010
- Liaises with the EO regarding exam time arrangements for access arrangement candidates
- Ensures staff appointed to facilitate access arrangements for candidates are **thoroughly** trained and understand the rules of the particular arrangement(s) and keeps a record of the content of training provided to facilitators for the required period
- Works with the EO to ensure invigilators and those acting as a facilitator fully understand the respective role and what is and what is not permissible in the exam room
- Liaise with the relevant member of the senior leadership team on the centre's policy on the use of word processors in examinations

Word Processor Policy (Exams)

The school Word Processor Policy is available electronically via the staff portal under Examinations/Polices.

Refer to [GR](#) (section 5.3) Policies available for inspection and [AA](#) (section 5.8)

- Ensures criteria for candidates granted **alternative rooming arrangements** is clear, meets JCQ regulations and best meets the needs of individual candidates and remaining candidates in main exam rooms

Alternative Rooming Arrangements Policy (Exams)

The school Separate Invigilation Policy is available electronically via the staff portal under Examinations/Polices.

Refer to [AA](#) (sections 4.2.1, 5.16) and [ICE](#) (section 14.18)

Alternative rooming arrangements, e.g. a room for a smaller group of candidates with similar needs (formerly known as separate invigilation)

Why have a policy on this?

In certain circumstances, a candidate with 'an established difficulty' may be eligible to take exams **in alternative rooming arrangements**. Centres may also receive requests from candidates (and/or parents/carers) to take their exams in alternative rooms. Having a documented policy ensures:

- the criteria for candidates granted **alternative rooming arrangements** is clear and complies with JCQ regulations
- the centre can demonstrate the policy if asked/challenged by a candidate (and/or parent/carer)

It may also be useful to include within this, the centre's policy for candidates seated in a 'small' room, 'access arrangements' room etc. (i.e. taking exams separate to the main cohort)

Exams officer

- Gathers signed **Personal data consent, Privacy Notice (AAO) and Data Protection confirmation** forms from candidates where required
- Applies for **approval** through **Access arrangements online (AAO)** via the **Centre Admin Portal (CAP)**, where required or through the awarding body where qualifications sit outside the scope of AAO
- Keeps a file for each candidate for JCQ inspection purposes containing all the required documentation (if documentation is stored electronically, an e-folder must be created for each individual candidate. The candidate's e-folder must hold each of the required documents for inspection)

Senior leaders, Teaching staff

- Support the ALS lead/SENCo in determining and implementing appropriate access arrangements/reasonable adjustments
- **Produce a word processor policy, specific to the centre**, which details the criteria the centre uses to award and allocate word processors for examinations

Internal assessment and endorsements

Head of centre

Controlled assessments, coursework and non-examination assessments

- **Ensures appropriate controls are in place which allow accurate data to be submitted to the awarding bodies, e.g. internally assessed marks**
- Ensures arrangements are in place to co-ordinate and standardise all marking of centre- assessed components and ensures that candidates' centre-assessed work is produced, authenticated and marked, or assessed and quality assured in accordance with the awarding bodies' instructions
- Ensures that teaching staff, in accordance with awarding bodies' instructions, return all subject-specific forms by the required date
- Provides fully qualified teachers to mark non-examination assessments, and/or fully qualified assessors for the verification of centre-assessed components
- Ensures an **internal appeals procedure** relating to internal assessment decisions is in place for a candidate to appeal against and request a review of the centre's marking (see Roles and responsibilities overview)
- Ensures a **non-examination assessment policy** is in place for GCE and GCSE qualifications which include components of non-examination assessment (For CCEA GCSE centres this would be a controlled assessment policy)

Non-examination Assessment Policy

The school Non-examination Assessment Policy is available electronically via the staff portal under Examinations/Polices.

Refer to [GR](#) (sections 5.3) Policies available for inspection, (5.7) Centre assessed work and [NEA](#) (section 1)

Also refer to the JCQ document **AI Use in Assessments: Protecting the Integrity of Qualifications** (<http://www.jcq.org.uk/exams-office/malpractice>)

- Ensures any irregularities relating to the production of work by candidates are investigated and dealt with internally if discovered prior to a candidate signing the authentication statement (where required) or reported to the awarding body if a candidate has signed the authentication statement

Senior leaders

- Ensure teaching staff have the necessary and appropriate knowledge, understanding, skills, and training to set tasks, conduct task taking, and to assess, mark and authenticate candidates' work (including where relevant, private candidates)
- Ensure appropriate internal moderation, standardisation and verification processes are in place

- Ensure teaching staff delivering OCR Cambridge Nationals, Entry Level Certificate or Project qualifications follow JCQ [Instructions for conducting coursework](#) and the specification provided by the awarding body
- Ensure teaching staff delivering reformed GCE & GCSE specifications (which include components of non-examination assessment) follow JCQ [Instructions for conducting non-examination assessments](#) and the specification provided by the awarding body
- For other qualifications, ensure teaching staff follow appropriate instructions issued by the awarding body
- Ensure teaching staff inform candidates of their centre assessed marks as a candidate may request a review of the centre's marking before marks are submitted to the awarding body

Teaching staff

- Ensure appropriate instructions for conducting internal assessment are followed
- Ensure candidates are aware of JCQ and awarding body information for candidates on producing work that is internally assessed (coursework, non-examination assessments, social media) prior to assessments taking place
- Ensure candidates are informed of their centre assessed marks as a candidate may request a review of the centre's marking before marks are submitted to the awarding body

Exams officer

- Identifies relevant key dates and administrative processes that need to be followed in relation to internal assessment
- Signposts teaching staff to relevant JCQ [Information for candidates documents](#) that are annually updated

Invigilation

Head of centre

- Ensures relevant support is provided to the EO in recruiting, training and deploying a team of invigilators
- Ensures, if contracting supply staff to act as invigilators, that such persons are competent and fully trained, understanding what is and what is not permissible (and not taking on its own an assurance from a recruitment agency, that this is the case)
- Determines if additional invigilators will be deployed in timed Art exams in addition to the subject teacher to ensure the supervision of candidates is maintained at all times

Exams officer

- Recruits additional invigilators where required to effectively cover all exam periods/series' throughout the academic year
- Collects information on new recruits to identify if they have invigilated previously and if any current maladministration/malpractice sanctions are applied to them
- Provides **thorough** training for new invigilators on the current instructions for conducting examinations and an update for the existing invigilation team so that they are aware of any changes in a new academic year before they are allocated to invigilate an exam
- Ensures invigilators supervising access arrangement candidates understand their role (and the role of a facilitator who may be supporting a candidate) and the rules and regulations of the access arrangement(s)
- Ensures invigilators are briefed on the access arrangement candidates in their exam room and made aware of the access arrangement(s) awarded (ensuring these candidates are identified on the seating plan) and confirms invigilators understand what is and what is not permissible
- Collects evaluation of training to inform future events

Entries: roles and responsibilities

Estimated entries

Exams officer

- Requests estimated or early entry information, at the start of the academic year, where this may be required by awarding bodies, from HoDs in a timely manner to ensure awarding body external deadlines for submission can be met
- Makes candidates aware of the JCQ **Information for candidates – Privacy Notice** at the start of a course leading to a vocational qualification or when entries are submitted to awarding bodies for processing for general qualifications

Senior leaders

- Provide entry information requested by the EO to the internal deadline
- Inform the EO immediately of any subsequent changes to entry information

Final entries

Head of centre

- Ensures appropriate controls are in place which allow accurate data to be submitted to the awarding bodies, e.g. entries

Exams officer

- Requests final entry information from HoDs in a timely manner to ensure awarding body external deadlines for submission can be met
- Informs HoDs of subsequent deadlines for making changes to final entry information without charge
- Confirms with HoDs final entry information that has been submitted to awarding bodies
- Ensures as far as possible that entry processes minimise the risk of entries or registrations being missed reducing the potential for late or other penalty fees being charged by awarding bodies
- Observes each awarding body's terms and conditions for the entry and withdrawal of candidates for their examinations and assessments, and observes any regulatory requirements for the qualification

Head of Department

- Provide information requested by the EO to the internal deadline
- Inform the EO immediately, or at the very least prior to the deadlines, of any subsequent changes to final entry information, which includes
 - changes to candidate personal details
 - amendments to existing entries
 - withdrawals of existing entries
- Check final entry submission information provided by the EO and confirms information is correct

Late entries

Exams officer

- Has clear entry procedures in place to minimise the risk of late entries
- Charges any late or other penalty fees to examination budgets

Senior leaders

- Minimise the risk of late entries by
 - following procedures identified by the EO in relation to making final entries on time
 - meeting internal deadlines identified by the EO for making final entries

Re-sit entries

Exams officer

- Requests final re-sit entry information from HoDs in a timely manner to ensure awarding body external deadlines for submission can be met
- Informs HoDs of subsequent deadlines for making changes to final entry information without charge
- Confirms with HoDs final re-sit entry information that has been submitted to awarding bodies
- Ensures as far as possible that entry processes minimise the risk of entries or registrations being missed reducing the potential for late or other penalty fees being charged by awarding bodies
- Observes each awarding body's terms and conditions for the entry and withdrawal of candidates for their examinations and assessments, and observes any regulatory requirements for the qualification

Head of Department

- Provide information requested by the EO to the internal deadline
- Inform the EO immediately, or at the very least prior to the deadlines, of any subsequent changes to re-sit entry information, which includes
 - changes to candidate personal details
 - amendments to existing entries
 - withdrawals of existing entries
- Check re-sit entry submission information provided by the EO and confirms information is correct

Candidate statements of entry

Exams officer

- Provides candidates with statements of entry for checking

Teaching staff

- Ensure candidates check statements of entry and return any relevant confirmation required to the EO

Candidates

- Confirm entry information is correct or notify the EO of any discrepancies

Pre-exams: roles and responsibilities

Access arrangements and reasonable adjustments

ALS lead/SENCo

- Ensures appropriate arrangements, adjustments and adaptations are in place to facilitate access to exams/assessments for candidates where they are disabled within the meaning of the Equality Act (unless a temporary emergency arrangement is required at the time of an exam)
- Ensures a candidate is involved in any decisions about arrangements, adjustments and /or adaptations that may be put in place for him/her
- Ensures exam information (JCQ information for candidates documents, individual exam timetable etc.) is adapted where this may be required for a disabled candidate to access it
- Allocates appropriately trained centre staff to facilitate access arrangements for candidates in exams and assessments (ensuring that the facilitator appointed meets JCQ requirements and fully understands the rule of the access arrangement)
- Where relevant, ensures the necessary and appropriate steps are undertaken to gather an appropriate picture of need and demonstrate normal way of working for a private candidate (including distance learners and home educated candidates) and that the candidate is assessed by the centre's appointed assessor

Briefing candidates

Exams officer

- Issues individual exam timetable information to candidates and informs candidates of any designated contingency **sessions** awarding bodies may identify in the event of national or significant local disruption to exams
- Prior to exams issues relevant JCQ information for candidates documents
- Where relevant, issues relevant awarding body information to candidates
- Issues centre exam information to candidates including information on:
 - exam timetable clashes
 - arriving late for an exam
 - absence or illness during exams
 - what equipment is/is not provided by the centre
 - food and drink in exam rooms
 - unauthorised items in exam rooms
 - when and how results will be issued and the staff that will be available
 - the post-results services information and how the centre will deal with requests from candidates
 - when and how certificates will be issued

Access to Scripts, Reviews of Results and Appeals Procedures

The school Access to Scripts, Reviews of Results and Appeals Procedures Policy is available electronically via the staff portal under Examinations/Polices.

Refer to [GR](#) (sections 5.13, 5.6j)

Dispatch of exam scripts

Exams officer

- Identifies and confirms arrangements for the dispatch of candidate exam scripts with the DfE (STA) 'yellow label service' or the awarding body where qualifications sit outside the scope of the service

Estimated grades

Senior leaders

- Ensure teaching staff provide estimated grade information to the EO by the internal deadline (where this still may be required by the awarding body)

Exams officer

- Submits estimated grade information to awarding bodies to meet the external deadline (where this may still be required by the awarding body)
- Keeps a record to track what has been sent

Internal assessment and endorsements

Head of centre

- Ensures procedures are in place for candidates to appeal internal assessment decisions and make requests for reviews of marking

ALS lead/SENCo

- Liaises with teaching staff to implement appropriate access arrangements for candidates undertaking internal assessments and practical endorsements

Teaching staff

- Support the ALS lead/SENCo in implementing appropriate access arrangements for candidates undertaking internal assessments and practical endorsements
- Assess and authenticate candidates' work
- Assess endorsed components
- Ensure candidates are informed of centre assessed marks prior to marks being submitted to awarding bodies

Senior leaders

- Ensure teaching staff assess and authenticate candidates' work to the awarding body requirements
- Ensure teaching staff assess endorsed components according to awarding body requirements
- Ensure teaching staff provide marks for internally assessed components and grades for endorsements of qualifications to the EO to the internal deadline
- Ensure teaching staff provide required samples of work for moderation and sample recordings for monitoring to the EO to the internal deadline

Exams officer

- Submits marks, endorsement grades and samples to awarding bodies/moderators/monitors to meet the external deadline
- Keeps a record to track what has been sent
- Logs moderated samples returned to the centre
- Ensures teaching staff are aware of the requirements in terms of retention and subsequent disposal of candidates' work

Candidates

- Authenticate their work as required by the awarding body

Invigilation

Exams officer

- Provides an annually reviewed/updated invigilator handbook to invigilators, trains new invigilators on the current regulations on appointment and updates experienced invigilators on any regulation changes and any changes to centre-specific processes
- Deploys invigilators effectively to exam rooms throughout an exam series (including the provision of a roving invigilator where a candidate and invigilator (acting as a practical assistant, reader or scribe) are accommodated on a 1:1 basis to enter the room at regular intervals in order to observe the conducting of the exam, ensure all relevant rules are being adhered to and to support the practical assistant/reader and/or scribe in maintaining the integrity of the exam)
- Allocates invigilators to exam rooms (or where supervising candidates due to a timetable clash) according to the required ratios
- Liaises with the ALS lead/SENCo regarding the facilitation and invigilation of access arrangement candidates

ALS lead/SENCo

- Liaises with the EO regarding facilitation and invigilation of access arrangement candidates

Invigilators

- Provide information as requested on their availability to invigilate throughout an exam series
- Attend/undertake training, update, briefing and review sessions as required
- Sign a confidentiality and security agreement and confirm whether they have any current maladministration/malpractice sanctions applied to them
- Collection of exam papers and other material from the exams office before the start of the exam.
- Collection of all exam papers in the correct order at the end of the exam and their return to the exams office.

JCQ Centre Inspections

Exams officer or Senior leader

- Will accompany the Inspector throughout a visit
- Ensures that Access Arrangement information is readily available for inspection at the venue where the candidate is taking the exam(s)

ALS lead/SENCo or relevant Senior leader (in the absence of the ALS lead/SENCo)

- Will meet with the inspector when requested to provide documentary evidence regarding access arrangement candidates and address any questions the inspector may raise

Seating and identifying candidates in exam rooms

Senior leaders and Head of Year

- To verify candidate identity outside the exam room whilst candidates prepare to enter, and once candidates are in the exam room.

Exams officer

- Ensures a procedure is in place to verify the identity of all candidates
- Ensures invigilators are aware of the procedure
- Provides seating plans for exam rooms according to JCQ and awarding body requirements (and ensures candidates with access arrangements are identified on the seating plan and invigilators are informed of those candidates with access arrangements and made aware of the access arrangement(s) awarded)

Invigilators

- Follow the procedure for verifying candidate identity provided by the EO
- Seat candidates in exam rooms as instructed by the EO/on the seating plan

Security of exam materials

Exams officer

- Confirms appropriate arrangements are in place to ensure that confidential materials are only handed over to those authorised by the head of centre
- Ensures access to the secure room is restricted and staff approved by the head of centre are accompanied by a keyholders at all times. There must be between two and six keyholders only (the exams officer must be one of the keyholders), each keyholder must fully understand their responsibilities as a key holder to the secure storage facility
- Has a process in place to demonstrate the receipt, secure movement and secure storage of confidential exam materials within the centre
- Ensures a log is kept at the initial point of delivery recording confidential materials received and signed for by authorised staff within the centre and that appropriate arrangements are in place for confidential materials to be immediately transferred to the secure storage facility until they can be removed from the dispatch packaging and checked in the secure room before being returned to the secure storage facility in timetable order
- Carefully checks question paper packets when they are removed from the dispatch packing and keeps a log of the check
- Ensures the secure storage facility contains only current and live confidential material (ensuring that past examination question papers, internal tests and mock examinations are not kept in the centre's secure storage facility)
- Ensures that examination stationery, e.g. answer booklets and formula booklets are stored in the secure room (attempting to store this material in the secure storage facility, when sufficient space allows)
- Ensures the integrity and security of any electronic question paper is maintained during the downloading, printing and collating process (ensuring printing is carried out in secure environment to prevent unauthorised personnel accessing live assessment materials and ensuring only authorised members of centre staff have access to electronic question papers)

At least two and no more than six members of centre staff should be authorised to handle secure electronic materials, one of whom must be the exams officer*. Other members of centre staff may assist with printing and collation provided they are under supervision.

*For AQA examinations, one member of centre staff can be authorised to handle secure electronic material.

Reception staff

- Follow the process to log confidential materials delivered to/received by the centre to the point materials are issued to authorised staff for transferal to the secure storage facility

Teaching staff

- Adhere to the process to record the secure movement of confidential materials taken from or returned to secure storage throughout the time the material is confidential

Timetabling and rooming

Exams officer

- Produces a master centre exam timetable for each exam series
- Identifies and resolves candidate exam timetable clashes according to the regulations (only applying overnight supervision arrangements as a last resort, once all other options have been exhausted and according to the centre's policy)
- Identifies exam rooms and specialist equipment requirements
- Allocates invigilators to exam rooms (or where supervising candidates due to an exam timetable clash) according to required ratios
- Liaises with site staff to ensure exam rooms are set up according to JCQ and awarding body requirements
- Liaises with the ALS lead/SENCo regarding rooming of access arrangement candidates

ALS lead/SENCo

- Liaises with the EO regarding rooming of access arrangement candidates
- Liaises with other relevant centre staff to ensure appropriate arrangements, adjustments and adaptations are in place to facilitate access for disabled candidates to exams

Site staff

- Liaise with the EO to ensure exam rooms are set up according to JCQ and awarding body requirements

Alternative site arrangements

Exams officer

- (Where/if applicable to the centre) Ensures question papers will only be taken to an alternative site where the published criteria for an alternative site arrangement has been met
- Will inform the JCQ Centre Inspection Service to timescale by submitting a JCQ Alternative Site arrangement notification using CAP (or through the awarding body where a qualification may sit outside the scope of CAP) of any alternative sites that will be used to conduct timetabled examination components of the qualifications listed in the JCQ regulations

Centre consortium arrangements

Exams officer

- (Where/if applicable to the centre) Processes applications for Centre Consortium arrangements using CAP to the awarding body deadline (or through the awarding body where a qualification may sit outside the scope of CAP)

Senior leaders

- (Where/if applicable to the centre) Inform the EO of any joint teaching arrangements in place and where the centre is acting as the consortium co-ordinator

Transferred candidate arrangements

Exams officer

- (Where/if applicable to the centre) Liaises with the host or entering centre, as required
- Processes requests for Transferred Candidate arrangements using CAP to the awarding body deadline (or through the awarding body where a qualification may sit outside the scope of CAP)
- Where relevant (for an internal candidate) informs the candidate of the arrangements that have been made for their transferred candidate arrangement

Internal exams

Exams officer

- Prepares for the conduct of internal exams under external conditions (where applicable to the centre)
- Provides a centre exam timetable of subjects and rooms
- Provides seating plans for exam rooms
- Requests internal exam papers from teaching staff
- Arranges invigilation (where applicable to the centre)

ALS lead/SENCo

- Liaises with teaching staff to make appropriate arrangements for access arrangement candidates

Teaching staff

- Provide exam papers and materials to the EO
- Support the ALS lead/SENCo in making appropriate arrangements for access arrangement candidates

Exam time: roles and responsibilities

Access arrangements

Exams officer

- Provides cover sheets for access arrangement candidates' scripts where required for particular arrangements
- Has a process in place to deal with emergency/temporary access arrangements as they arise at the time of exams
 - applies for approval through AAO where required or through the awarding body where qualifications sit outside the scope of AAO

Candidate absence

Exams officer

- Inform Invigilators of the process for dealing with absent candidates through training
- Once candidates are seated and have started the examination make a note of any absence
- Make phone calls home
- Inform attendance officer and registrar

Invigilators

- Are informed of the process for dealing with absent candidates through training
- Ensure that confirmed absent candidates are clearly marked as such on the attendance register and seating plan

Candidate behaviour

See *Irregularities* below.

Candidate belongings

See *unauthorised items* below.

Candidate late arrival

Exams officer

- Within JCQ guidelines and using his/her own professional discretion, the EO may offer an opportunity to latecomers to sit the exam, including whether to offer the full exam time.
- Student who arrive late are instructed to report to main Reception, collected by the EO and accompanied to the exam venue. All examination instructions are given to the student outside the exam venue and an invigilator supervises the start of their exam once inside the venue.

- The recording of persistent lateness will be escalated to senior management for response and appropriate sanction according to the schools disciplinary procedures.

A candidate who arrives after the start of the examination may be allowed to enter the examination room and sit the examination. This is entirely at the discretion of the centre.

A candidate who arrives late, and is permitted by the centre to sit the examination, must be allowed the full time for the examination. [ICE 21]

- Ensures that candidates who arrive very late for an exam are reported to the awarding body by submitting a report on candidate admitted very late to examination room using CAP to timescale
- Warns candidates that their script may not be accepted by the awarding body

Invigilators

- Are informed of the policy/process for dealing with late/very late arrival candidates through training
- Ensure that relevant information is recorded on the exam room incident log

Conducting exams

Head of centre

- Ensures venues used for conducting exams meet the requirements of JCQ and awarding bodies

Exams officer

- Ensures exams are conducted according to JCQ and awarding body instructions
- Uses an *exam day checklist* to ensure each exam session is fully prepared for, unplanned events can be dealt with and associated follow-up is completed

Dispatch of exam scripts

Exams officer

- Dispatches scripts as instructed by JCQ and awarding bodies
- Keeps appropriate records to track dispatch

Exam papers and materials

Exams officer

- Organises exam question papers and associated confidential resources in date order in the secure storage facility
- Attaches erratum notices received to relevant sealed question paper packets
- Collates attendance registers and examiner details in date order
- Regularly checks mail or email inbox for updates from awarding bodies
- In order to avoid potential breaches of security, ensures care is taken to ensure the correct question paper packets are opened by ensuring a member of centre staff, additional to the person removing the papers from secure storage, e.g. an invigilator, checks the day, date, time, subject, unit/component and tier of entry, if appropriate, immediately before a question paper packet is opened
- Ensures this **second pair of eyes check** is recorded
- Where allowed by the awarding body, only releases exam papers and materials to teaching departments for teaching and learning purposes after the published finishing time of the exam, or until any timetable clash candidates have completed the exam

Exam rooms

Head of centre

- Ensures that internal tests, mock exams, revision or coaching sessions are not conducted in a room 'designated' as an exam room
- Ensures that when a room is 'designated' as an exam room it is not used for any purpose other than conducting external exams
- Ensures only approved centre staff (who have not taught the subject being examined) are present in exam rooms to perform permitted tasks
- Ensures the centre's policy relating to food and drink that may be allowed in exam rooms is clearly communicated to candidates
- Ensures the centre's policy on candidates leaving the exam room temporarily is clearly communicated to candidates

Food and Drink Policy (Exams)

Students are advised during assembly and powerpoint that bottled water is allowed into an exam room as long as the label is removed to comply with JCQ regulations. Items of food are not allowed in an exam room unless for medical reason, and in such cases permission must be sought from the EO in advance of the exam season, or during a supervised break for clash students only.

Refer to [ICE](#) (section 18)

Leaving the Examination Room Policy

To be confirmed

Refer to [ICE](#) (section 23)

Exams officer

- Ensures exam rooms are set up and conducted as required in the regulations
- Provides invigilators with appropriate resources to effectively conduct exams
- Briefs invigilators on exams to be conducted on a session by session basis (including the arrangements in place for any transferred candidates and access arrangement candidates)
- Ensures sole invigilators have an appropriate means of summoning assistance (if this is a mobile phone, instructs the invigilator that the mobile phone is only allowed to be used for this specific purpose and that it must be kept on silent mode)
- Ensures invigilators understand they must be vigilant and remain aware of incidents or emerging situations, looking out for malpractice or candidates who may be in distress, recording any incidents or issues on the exam room incident log
- Ensures invigilators understand how to deal with candidates who may need to leave the exam room temporarily and how this should be recorded on the exam room incident log
- Provides authorised exam materials which candidates are not expected to provide themselves
- Ensures invigilators and candidates are aware of the emergency evacuation procedure
- Ensures invigilators are aware of arrangements in place for a candidate with a disability who may need assistance if an exam room is evacuated

Senior leaders

- Ensure a documented emergency evacuation procedure for exam rooms is in place
- Ensure arrangements are in place for a candidate with a disability who may need assistance if an exam room is evacuated

Emergency Evacuation Policy (Exams)

The school Emergency Evacuation Policy is available electronically via the staff portal under Examinations/Polices.

Refer to [ICE](#) (section 25)

Site staff

- Ensure exam rooms are available and set up as requested by the EO
- Ensure grounds or centre maintenance work does not disturb exam candidates in exam rooms
- Ensure fire alarm testing does not take place during exam sessions

Invigilators

- Conduct exams in every exam room according to JCQ Instructions for conducting examinations and/or awarding body requirements and as instructed by the centre in training/update and briefing sessions

Candidates

- Are required to follow the instructions given to them in exam rooms by authorised centre staff and invigilators
- Are required to remain in the exam room for the full duration of the exam

Irregularities

Head of centre

- Ensures (as required by an awarding body) any cases of alleged, suspected or actual incidents of malpractice or maladministration before, during or after examinations/assessments (by centre staff, candidates, invigilators) are investigated and reported to the awarding body **immediately**, by completing the appropriate documentation

Managing Behaviour Policy (Exams)

To be confirmed

Refer for prompt to [ICE](#) (section 24)

Why have a policy on this?

Having a documented policy/procedure on how behaviour in exam rooms is managed ensures staff conducting exams understand the process to be followed and candidates are aware of the possible consequences of any disruptive actions

Senior leaders

- Ensure support is provided for the EO and invigilators when dealing with disruptive candidates in exam rooms
- Ensure that internal disciplinary procedures relating to candidate behaviour are instigated, when appropriate

Exams officer

- Provides an exam room incident log in all exam rooms for recording any incidents or irregularities
- Actions any required follow-up and reports to awarding bodies as soon as practically possible after the exam has taken place

Invigilators

- Record any incidents or irregularities on the exam room incident log (for example, late/very late arrival, candidate or centre staff suspected malpractice, candidate illness or needing to leave the exam room temporarily, disruption or disturbance in the exam room, emergency evacuation)

Malpractice

See *Irregularities* above.

Special consideration

Senior leaders

- Provide signed evidence to support eligible applications for special consideration

Exams officer

- Processes eligible applications for special consideration to awarding bodies
- Gathers evidence which may need to be provided by other staff in centre or candidates
- Submits requests to awarding bodies to the external deadline

Special Consideration Policy

The school Special Consideration Policy is available electronically via the staff portal under Examinations/Polices.

Candidates

- Provide appropriate evidence to support special consideration applications, where required

Unauthorised items

Arrangements for unauthorised items taken into the exam room

Unauthorised items including watches are checked for and reminded to candidates to place in their bags by staff outside the exam venue. Bags and belongings are all left at the side of the exam venue.

In the examination room candidates must not have access to items other than those stated in the instructions on the question paper, the stationery list or the specification for that subject.

Potential technological/web enabled sources of information such as... are not permitted... ideally, all unauthorised items are left outside of the examination room... any pencil cases taken into the examination room must be see-through... any unauthorised items that have been taken into the examination room must be placed out of reach of the candidates (and not under their desks) before the examination starts. This would normally be at the front of the examination room or a similar arrangement that enables the invigilator to control access to the items... If candidates have access to unauthorised items in the examination room this may be considered as malpractice. They could be subject to penalties in accordance with the JCQ publication Suspected Malpractice in Examinations and Assessments: Policies and Procedures...

Prior to the examination starting, the invigilator must ensure that candidates have removed their wrist watches, placing them on their desks.

A head of centre may, if he/she so wishes, prohibit candidates bringing a wrist watch into the examination room. In this case candidates would be required to leave their watches outside of the examination room. Refer for prompt to ICE (section 18)

Invigilators

- Are informed of the arrangements through training

Internal exams

Exams officer

- Briefs invigilators on conducting internal exams
- Returns candidate scripts to teaching staff for marking

Invigilators

- Conduct internal exams as briefed by the EO

Results and post-results: roles and responsibilities

Internal assessment

Senior leaders

- Ensures teaching staff keep candidates' work, whether part of the moderation sample or not, secure and for the required period stated by JCQ and awarding bodies
- Ensures work is returned to candidates after the retention period or disposed of according to the requirements

Managing results day(s)

Senior leaders

- Identify centre staff who will be involved in the main summer results day(s) and their role
- Ensures senior members of staff are accessible to candidates immediately after the publication of results so that results may be discussed and decisions made on the submission of any requests for post-results services and ensures candidates are informed of the periods during which centre staff will be available so that they may plan accordingly

Exams officer

- Works with senior leaders to ensure procedures for managing the main summer results day(s) (a results day programme) are in place

Arrangements put in place for the main summer results day(s):

A level: Thursday 15th August

GCSE: Thursday 22nd August

Results will be emailed to student only at 8am to Year 13 / 9am to Year 11. Collection of results envelope will be available from the Main hall at 9am.

Results will only be handed out to student only. Parents cannot collect on behalf.

Review of marking information and appeals procedure will be enclosed into the envelope.

Site staff

- Ensure the centre is open and accessible to centre staff and candidates, as required for the collection of results

Accessing results

Head of centre

- Ensures results are kept entirely confidential and restricted to key members of staff until the official dates and times of release of results to candidates
- Understands that it is not permitted to withhold provisional results from candidates under any circumstances

Exams officer

- Informs candidates in advance of when and how results will be released to them for each exam series
- Accesses results from awarding bodies under restricted release of results, where this is provided by the awarding body
- Resolves any missing or incomplete results with awarding bodies
- Issues statements of results to candidates on issue of results date
- Provides summaries of results for relevant centre staff on issue of results date

Post-results services

Head of centre

- Ensures an **internal appeals procedure** is available where candidates disagree with any centre decision not to support a clerical re-check, a review of marking, a review of moderation or an appeal

- Ensures that senior members of centre staff are available immediately after the publication of results
- Understands that if the centre has concerns about one of its component/subject cohorts, then requests for reviews of marking should be submitted for all candidates believed to be affected (candidate consent is required as marks and subject grades may be lowered, confirmed or raised)

Exams officer

- Provides information to candidates and staff on the services provided by awarding bodies and the fees charged (see also above **Briefing candidates** and **Access to Scripts, Reviews of Results and Appeals Procedures**)
- Publishes internal deadlines for requesting the services to ensure the external deadlines can be effectively met
- Provides a process to record requests for services and to collect candidate informed consent (**after** the publication of results) and fees where relevant
- Submits requests to awarding bodies to meet the external deadline for the particular service
- Tracks requests to conclusion and informs candidates and relevant centre staff of outcomes
- Updates centre results information, where applicable

Teaching staff

- Meet internal deadlines to request the services and gain relevant candidate informed consent
- Identify the budget to which fees should be charged

Candidates

- Meet internal deadlines to request the services
- Provide informed consent and fees, where relevant

Analysis of results

Exams Officer/Data Manager

- Provides analysis of results to appropriate centre staff
- Provides results information to external organisations where required
- Undertakes the the DfE School and College Checking Exercises (where applicable to the centre) <https://tableschecking.education.gov.uk>

Certificates

Certificates are provided to centres by awarding bodies after results have been confirmed.

Certificate Issue Procedure and Retention Policy

Certificates are presented in person and collected and signed for.

For GCSE certificates students who have progressed to A 'level will be given certificates during PSHE, students will check and sign a log when handed out.

Certificates may be collected on behalf of a candidate by a third party, provided they have been authorised to do and consent sent to exams in writing.

Certificates that are uncollected or unclaimed after two years will be destroyed, refer to the Archiving Policy this is available electronically via the staff portal under Examinations/Polices.

Candidates

- May arrange for certificates to be collected on their behalf by providing the EO with written or email permission/authorisation; authorised persons must provide ID evidence on collection of certificates

Exams review: roles and responsibilities

Exams officer

- Provides SLT with an overview of the exam year, highlighting what went well and what could be developed/improved in terms of exams management and administrative processes within the stages of the exam cycle
- Collects and evaluates feedback from staff, candidates and invigilators to inform an exams review

Senior leaders

- Work with the EO to produce a plan to action any required improvements identified in the review

Retention of records: roles and responsibilities

Exams officer

- Keeps records as required by JCQ and awarding bodies for the required period
- Keeps records as required by the centre's records management policy
- Provides an exams archiving policy that identifies information held, retention period and method of disposal

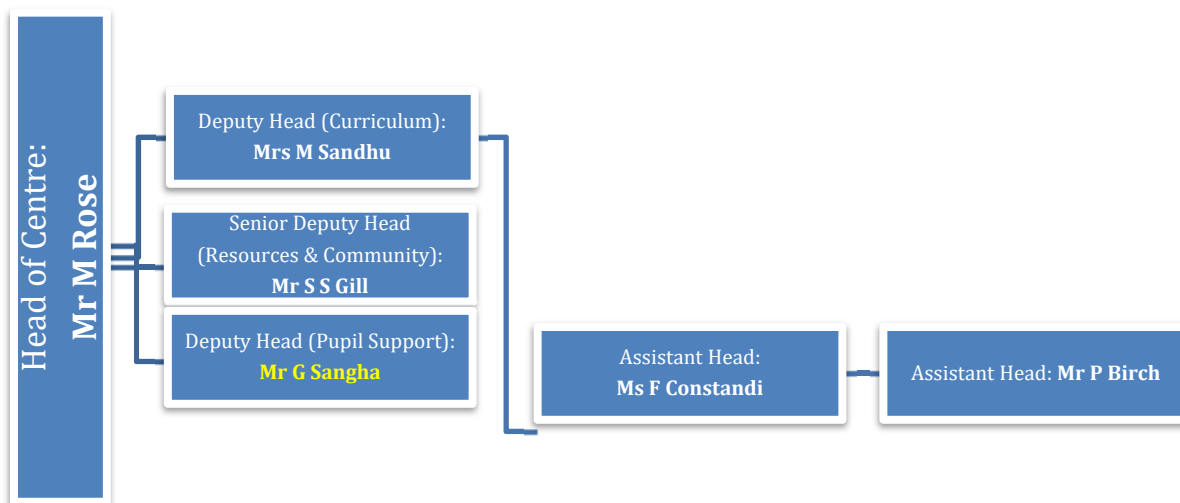
Exams Archiving Policy

The school Exams Archiving Policy is available electronically via the staff portal under Examinations/Polices.

APPENDIX 1



It is the responsibility of the head of centre to ensure that his/her centre... has in place a written escalation process should the head of centre, or a member of the senior leadership team with oversight of examination administration, be absent (GR 5.3)



APPENDIX 2



EXAMINATION LOCKDOWN POLICY

In the event of a lockdown, the following procedures apply;

- Tell candidates to stop writing immediately and close their answer booklet.
- Collect the attendance register.
- Make a note of the time when the examination was suspended.
- Instruct candidates to remain silent, leave all examination materials on their desks and hide under desks.
- Where safe/possible, communicate (via mobile phone/walkie talkie) the situation to the exams officer (ensuring that all mobile phones/walkie talkies are on 'silent' mode).
- Lock all windows and close any/all curtains/blinds.
- Switch off all lights.
- Lock all doors and/or use tables, or any other furniture, to barricade the entrance to the examination room.
- (if the threat is a chemical or toxic release) instruct candidates to cover their nose and mouth (their own clothing can be used) and attempt to use anything to hand to seal up cracks around doors and any vents into the room.
- Where safe/possible, the exams officer will collate the information from all exam rooms and forward this to the head of centre immediately.
- The head of centre will make informed decisions on alerting parents/carers, awarding bodies and emergency services.
- If appropriate, where safe/possible, and following centre policy, the exams officer (or invigilators in the absence of the exams officer) will initiate the emergency evacuation procedure.
- The exams officer will collect all examination papers and materials for safe/secure storage following advice from the appropriate awarding bodies.